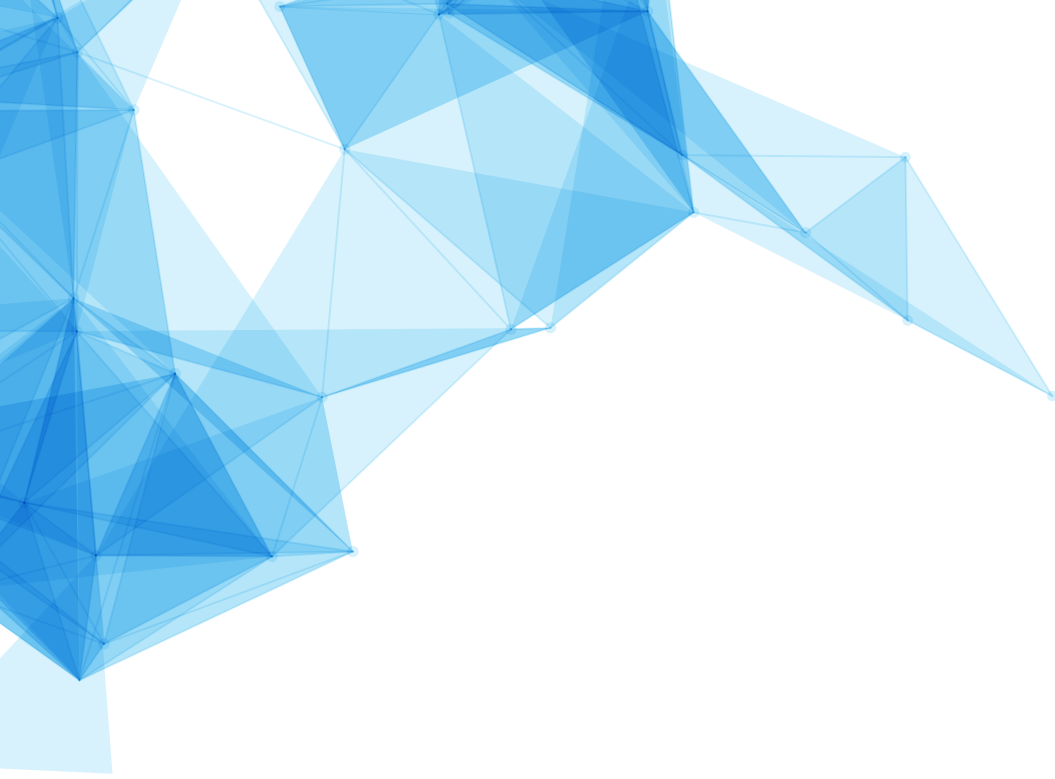


**CECS**  
COMMUNITY  
EDUCATIONAL  
CENTRE SOCIETY

**ANNUAL REPORT  
2015 - 2016**





# CONTENTS

From The Director's Desk

CECS Report

Special Introductory

Story Of A Wonderful Journey - *Anniversary Special*

Project List 2015 - 2016

Our Vision

Our Mission

Our Key Partners











## FROM THE DIRECTOR'S DESK

It has been a great year for CECS to have achieved a long cherished dream by inaugurating Rajeswari Karuna School Tuli, a dream which has been realised with the support from The Hans Foundation. I have worked with children for many years but didn't have much privilege to work with tribal children from hill areas of Nagaland and North-East as a whole hence I envisioned a school with a difference with a **PURA** concept which means **Provision of Urban Amenities in Rural Areas**. The R.K School is situated at the foot hills of Mokokchung district and easily accessible to four major districts of Nagaland and adjoining areas of Assam and Arunachal. It took two years to construct the residential school, developing 18 acres of land area with picture squat site and natural landscape. CECS has been working with underprivileged children for many years and through the years we have developed a great sense of responsibility to educate young minds, to build vibrant societies and progressive community to live in.

This year has been challenging with the upgradation of new system and invoking several new ideas for the organization, however with the positivity of the team and dedicated staff members much have been achieved and many changes continue to take place. Wipro Care has been included as one of the supporting partners for Informal Education Centres with a

commitment to reach out to 600 children and in future CECS plans to invite other partners for various projects undertaken by the Organisation in reaching out to communities in various levels of development and education.

CECS has also celebrated 10 years anniversary with the theme **"WE RISE BY LIFTING OTHERS"** on 1st October 2015. Looking back to those years when CECS was a small organisation which struggled to carry out daily activities with no financial support from either Government agency nor other funders but it were these difficulties that taught the Organisation many lessons the hard way and also how to climb the uphill without looking back and without fear into what accomplishments it has achieved today.

I sincerely thank all the partners and well wishers who have been supporting us selflessly and investing through us towards underprivileged communities and children in and around Nagaland impacting hundreds of individuals and families. My heartfelt gratitude goes out to all the staff of CECS for the massive effort and dedication that has made the Organization achieve its goal.

**Subonenba Longkumer**  
Director, CECS



## INTRODUCTION

This year's annual report highlights some of the positive changes we are working hard for, with the help of our partners and well wishers we could deliver results in empowering and changing the lives of children through education, rehabilitation, advocacy and awareness programmes. It has been an enormous blessing for CECS as we celebrated the Organization's 10 years of existence. We were also able to start Rajeshwari Karuna School, Tuli our full time residential education Programme for rural children. The extraordinary stories of children keep inspiring us to keep evolving and improving our working ethos. CECS engages in the lives of our children and the lives of their family because we believe that our work for the children will not be complete if we do not effect the lives of their family and their communities.

*"We want to see not a temporary change but a lasting change"*





# CECS REPORT 2015 - 2016

## **COMMUNITY EDUCATIONAL CENTER SCHOOL:**

The quality of education is essentially about learning. The education programme is running successfully for this annual year we have seen an enrollment of 483 children belonging to marginalized sections of the society. With the help of our supporters we could provide new school uniforms for the children. The following activities are being continued.

## **EDUCATION PROGRAMME:**

The school incorporates the Nagaland Board of School Education (NBSE) syllabus.

## **EXTRA VOCATIONAL SKILL TRAINING:**

Cutting and tailoring activity is imparted to help the girl child become self-dependent on her individual skills. Children are given the opportunity to learn different skills through various workshops.

## **PARENTS-TEACHERS MEETING (PTM):**

We consider it important to discuss the progress of every child. We take care to counsel and guide parents on every aspect of their child including behavioral issues, home management techniques, school attendance and other provisions.

## **HOME VISITS:**

This is to follow up on students who are irregular in attending classes. It also helps the educator to understand and study the condition of a child which helps him/her to deal with the concerned child accordingly. It is also done for identification and enrolment of new students. This is done for both formal and informal schooling program.

## **INFORMAL EDUCATION FOR MARGINALIZED CHILDREN (IEMC):**

Informal Education for Marginalized Children highlights the need of those children who have either never enrolled in any schooling programme or have dropped out for various reasons, under IEMC programme these centers serve as a good option for these children. Most of these children have been rescued through interventions and awareness. The parents or families are usually migrants from other districts and also from different states. The drop out rate for these children is also high as they keep migrating to other places for better labour opportunities and income. This trend is very common in most of the IEMC study centers where such children are enrolled for imparting informal education. Over the past years IEMC has made a great impact in the lives of the children attending the centers. For this year 196 IEMC students have been mainstreamed into formal schooling. So far 12 centers have been running successfully under this programme. CECS is also planning to introduce more IEMC centers in other areas around Dimapur in-order to reach out to more marginalized children. New enrollments have begun for the year 2016.



*A special mention to Lt. Gen. S. M. Mehta the CEO of The Hans Foundation who visited our Community Educational Center School and gave valuable lessons to everyone.*

# ADVOCACY AND AWARENESS ON CHILD RIGHTS & CHILD PROTECTION



## CHILDLINE 1098 - 24/HR CARE & PROTECTION

The CHILDLINE Advisory Board (CAB) was formed and it will be the principal policy-making body of CHILDLINE at the city/district level and is responsible for ensuring effective functioning of CHILDLINE. The board comprises of government officials, NGOs, corporate and concerned individuals. The key functions of the CAB is to review the functioning of CHILDLINE and suggest measures to enhance its service.

## CHILDLINE 1098 ACTIVITIES 2015 IN BRIEF

- **15 Hoardings at different strategic locations including all the Police Stations.**
- **Formation of Neighborhood Children's parliament.**
- **District level Sensitization Programme held in collaboration with District administration, Police Commissionerate, District Child protection Unit Dimapur and CHILDLINE Dimapur.**
- **Sensitization programmes dealing with abused children for the medical staff members of District Hospital Dimapur.**



## OPEN SHELTER HOME

Open Shelter Home is a 24/hr Crisis Management Center for children in need by receiving and providing necessary assistance and care. It works to help reduce child vulnerability to exploitation through awareness and help reinstate/reintegrate these children into families, alternative care and community. It provides opportunities for education to help develop the child's potential and talent. It also provides nutrition, healthcare, sanitation and hygiene, education, vocational training and recreational facilities and protection against abuse and exploitation. In the current year Open Shelter Home has received 80 children. Open Shelter Home provides counseling and interaction to every child in the Home, which helps identify their needs.

## National Child Labour Project (NCLP)

National Child Labour Project (NCLP) is a project which aims to identify those children who are engaged in hazardous occupations and to put them into centres in order to enable them to be mainstreamed into formal schooling system. CECS as an implementing agency is currently running 20 NCLP Centres in Dimapur and has enrolled a total of 1000 children in the 20 centres. The project conducts informal classes in the centres, imparts various skill development activities, rescue children engaged in hazardous occupations, provide nutrition through mid-day meals, extra curricular activities and has also opened bank accounts for 812 children, thus empowering children to actively participate in their development and to take charge of their lives.



# MOBILE MEDICAL UNIT

MMU has been serving the rural community of Mokokchung district since its introduction in 2013. The unit organizes Rural camps for Health & Sanitation, hygiene awareness, mother-child nutrition, pregnant women care, etc.

MMU is a community centric health unit, it is functioning with the help of various health functionaries including Doctors, Nurse, Health Volunteers, etc. Health Volunteers are trained and equipped with health check up kits. There is a minimum of 1 Health Volunteer in every village.



## RESULTS ACHIEVED 2015 - 2016

Treated **4495** beneficiaries

Reached out to **17980** indirect beneficiaries



**WE BELIEVE IN REACHING PEOPLE & TOUCHING THEIR LIVES THROUGH SERVICE**

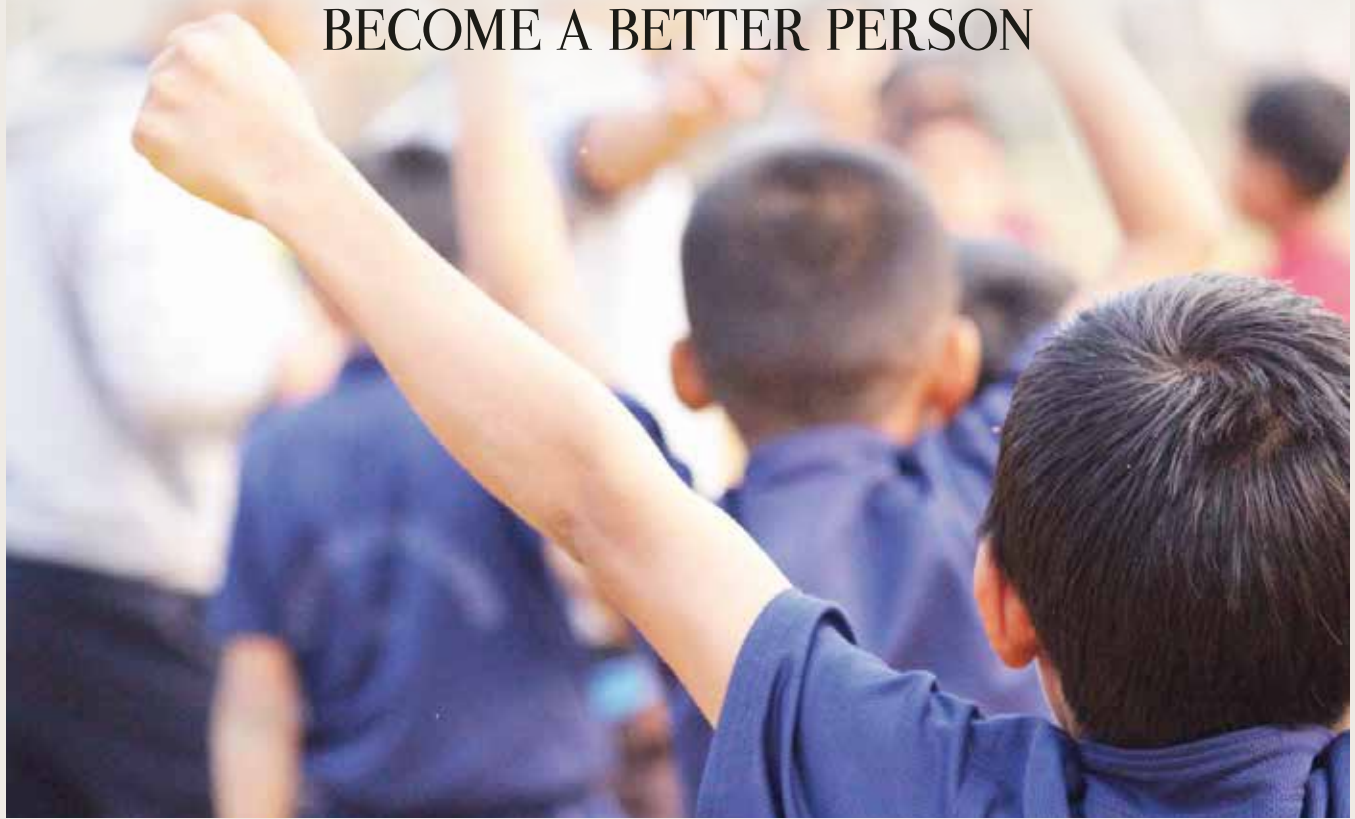
## ACTIVITIES IN BRIEF

- World Diabetes Day observed along with awareness and medical camp.
- In order to have more efficient workers in the villages at all times, regular training on issues like breast feeding and nutrition for mothers and new borns, basic ANC care, etc., are given by the health workers.
- Health Workers spread awareness in small groups in all the ten villages. To reach out to the individuals and families.
- Spreading awareness on personal level and within the families for total health care.
- Medical camp at Nagaland Gate Border of Nagaland and Assam, these areas are medically neglected. Alcoholics and drug users are common in these areas. General health camp was conducted.





RECAP IN NUMBERS  
LEARN LEAD EDUCATE  
600 + CHILDREN  
TO FORMAL EDUCATION  
HELP THE CHILD  
REALIZE HIS DREAMS  
TOUCHING 1000  
LIVES EACH DAY  
EVERY CHILD NEEDS  
ONLY AN OPPORTUNITY  
CHILDLINE 1098  
170 INTERVENTION CASES  
EDUCATION HELPS A MAN  
BECOME A BETTER PERSON



————— *Introduction to* —————

**COMMUNITY EDUCATIONAL CENTRE SOCIETY  
NEW FORMAL RESIDENTIAL SCHOOLING  
PROGRAMME**





# RAJESHWARI KARUNA SCHOOL

Since 2013 with support from the Hans Foundation CECS has been involved in infrastructural development for the new school at Mokokchung district of Nagaland. The support came at the right time when CECS was planning to open a new residential schooling for rural children residing in and around the district, with most of the government schools closed down we wanted to provide the community with a school that gives good education as well as provide them with well developed infrastructural facilities for learning. The new building has spacious classrooms, staff rooms, hostel rooms, and staff quarters.

The new school was formally inaugurated on 16 April 2015. The occasion was graced by our Hon'ble Governor B. P. Acharya and Lt. Gen. S. M. Mehta, CEO of The Hans Foundation along with CECS members and staffs and community leaders. The new educational programme on residential schooling for children aims to provide rural children with a good school by investing in child centric and quality learning education.



# A BRIEF INTRODUCTION

This annual year we are immensely happy to introduce our new initiative “RAJESHWARI KARUNA SCHOOL”. The project was under infrastructural development and has been completed and is now a full functioning school with full support from The Hans Foundation. RKS aims:

- *to provide quality education for students delivered through creation of student friendly learning spaces.*
- *increased access to various top rated educational/technical institutions.*

We believe that every child needs a different approach and an interactive learning ground. We work towards guiding the children for a better tomorrow. Every class rooms have been structured and designed in a way to make the child feel secure.

## **Innovative Learning:**

RKS implements the XSEED Living Knowledge System. An Education on Integrated Curriculum, Teacher Training and Assessment Program for K-8 Schools.





# HIGHLIGHTS 2015

## **Teacher Training:**

3 days training was conducted for the teachers of Rajeshwari Karuna School Tuli and CEC school Dimapur from 8th - 10th January 2016 on class room management, how to be a motivator for the students, understanding the student's psychology, how to assist and encourage the students and identifying the slow learners - pushing them/supporting them with positive remarks and comments. Most of the training session were activity based sessions. The training was successful and fruitful. Teachers were more enlightened on the class room management, understanding the child, how positive remarks and comments encourage the child to grow and develop more positively. Teachers were also enlightened on how to identify the child with special problems. "Not how much you teach but how much the child learn" was one of the session where all the trainees reflect back on their teaching and learn a lot.

## **Parents - Teachers Meetings (PTMs):**

2 to 3 Parents - Teachers Meeting (PTMs) is to be held every annual year. Parents were briefed on the daily activities of the school and improvement of their child/ward. Parents shared their views/suggestions for further development of the school and agreed to extend full support in making RKS an ideal place for the children to study and learn. Parents also shared their satisfaction about the functioning of the school and their children's development during 6 months in studies, behavior, and their participation in social activities. Parents also agreed with the school authority to identify the inborn talent in their child and to encourage their child to develop their skills and guide their children as per his/her interest and not to impose parents' interest on the child. Parents-teachers social work to be held at least once a year. Parents-teachers social work was organized in the school campus on the 7th of November 2015 with a view to have more interaction informally, involve them more and share responsibilities in developing the school for the benefit of all.

## **XSEED Lernometer Test:**

A one day XSEED Lernometer Test is held for all the students of RKS from grade 1 to 4. Lernometer is a multiple choice test to assess the students understanding about what they study and if they are able to apply it to existing and new situations. Also measures the important thinking skill and abilities that are necessary to succeed in all academic subjects.



# EXCERPTS FROM RAJESHWARI KARUNA SCHOOL - ANNUAL REPORT 2015



## Beneficiary

*"I am very happy to be in RKS... I love my old school too.. but here I am getting better facilities.. class room teaching is different from last year.. here I can share and write my own ideas.. I like this method of teaching and learning which is based on activity based learning."*

**Jongshinaro (Class 4)**



## Beneficiary

*"I like RK School because there are many things to play and our teachers teaches us in such a way that we understand and also they teach us good manners."*

**Imnainla (Class 4)**



## Program Team

*"Children are really improving and it is visible through their performances in the last six months... I am very glad that they have picked up the new method of teaching and they really like it.. I am happy that I am doing something and I am well determining to do more."*

**Mr. Moatoshi (Teacher)**



## Program Team

*"It is a privilege for me to be a part of RK school Tuli working as a teacher and teaching these wonderful children I have learned a lot and it is one of my best experience."*

**Marpokla (Teacher)**

## Secondary Beneficiary

*"Sending my child to RK School Tuli has benefited our grandchild a lot not only in studies but in all round development - how to be disciplined, to love the elders and preserving the cultural heritage. Our child also told us to love and keep the environment clean and safe... never thought that our child of 7 years could learn so much, in fact we are learning a lot from the children."*

**Mr. & Mrs. Jamir (Guardians)**

## Secondary Beneficiary

*"My child has improved as compared to last year. They are not like others, my children are slow learners. Academically they are weak but I can see they are taking part in all school activities, taking leadership, speaking out on how they feel and have the nerve to face others and mingle with others. I thank all the staff of RKS Tuli for what they have done and also look forward for them, to do better."*

**Parents of Sunjemyanger (Class 4)**



*Do not keep children to their studies by compulsion but by Play.*  
(Plato)

During the first few months of implementation of XSEED Education Programme the children showed confidence in interacting with teachers and other classmates, quick learning and quality lessons. It trained teachers for better and improved class room management, assessment on the progress of the students, discussion on the problems, struggle, and success achieved by the teachers in executing XSEED programs.





Dear friends

I am thrilled to share with you, my one year experience as Headmaster of Rajeshwari Karuna School, Tuli. RKS is filled with enthusiastic students who are at all times ready to learn with supportive parents and guardians who invested in our children's education and development, and a dedicated professional staff committed to providing our students with an enriching and engaging education. We are one community with one vision - excellence - and we work together to strive for this in all that we do.

With XSEED Curriculum, our students receive a solid foundation of reading skills, purposeful writing, mathematical reasoning, and critical thinking. Our curriculum is integrated with engaging strategies and new technologies. Most of all, classroom instruction is differentiated, so our students get what they need to maximize their personal best potential.

Our school community is special, and we all work together to be safe, respectful, and responsible. We have a strong emphasis on educating the whole child and in addition to academics, our students work together, play together, and come together as a community.

I am honored to be the Headmaster of this wonderful school. I am proud of our school, and more importantly, extremely proud of our students and the responsible, intelligent, creative, and caring individuals.

**Mr. Mhondamo Lotha**  
Headmaster, RKS Tuli



# STORY OF A WONDERFUL JOURNEY ANNIVERSARY SPECIAL



*“Change is the End result of all true learning”*

*Leo Buscalgia*

As **CECS** celebrates its 10 years of existence, we take this opportunity to communicate with our readers, to celebrate and share our journey so far. Take a moment to read through our stories to Know and Understand us better. An orphan who worked as a domestic help, with little support he completed his studies. He had a dream to change his life and that of many others like him. He worked as a volunteer with World Vision on the Community Educational Programme. When World Vision retreated its steps he along with other enthusiasts took up the project. With no alternative help they began their humble journey struggling for years. But the zeal to see through their goals pushed them to work harder. In 2008 CECS got its official recognition. From then on the journey began.

CECS gathered its funds through concerts, awareness and other available means. It started

the formal schooling programme with 200 children and 12 volunteer teachers. They had only one goal “to educate the children” it saw them through difficulties and hardships. This goal still stands as the core foundation for Community Educational Center Society. As Martin Luther King said “To serve... you need only a heart full of grace and a soul generated by love”.





*I slept and dreamt that life was Joy.  
I awoke and saw that life was service.  
I acted and behold, service was Joy*

Rabindranath Tagore

***The leaders of Community Educational Center Society worked with single-mindedness for a cause they believed in. They say their strive and goals have not ended, they are only in the phase of a journey to see and be a part of some bigger change. This is true of every individual who stood beside the cause that CECS stands for and have worked every step towards its fulfillment. There are still many goals to be achieved but in this 10th year of CECS we remember the struggles and achievement of CECS and take this opportunity to celebrate them. CEC School is now a full time educational schooling programme for marginalized children with 480 children. Rajeshwari Karuna School Tuli, CECS second formal schooling residential programme was also started this annual year.***







***“...now they see the school building and our playing ground and I have something to say back to them...”***

***“I thought I lost my way. I was confused because I ran from school when I heard fire had claimed our house”*** says Fazabi. In 2005 when a fire claimed all their belongings, she was a student in CECS. Her family had to build from scratch. Looking back, she is extremely glad that CECS offered no cost education or her parents would have stopped her schooling. Fazabi lives with her mother at Master colony in Dimapur, she is originally from Manipur. Her story is of endurance and loyalty. When her father left for their native village in Manipur, her mother and other siblings stayed back in Dimapur. Her brother who works at a workshop has been taking care of them.

As she recalls her early years of education at Rail Bazaar she remembers, “Sir Longkumer used to teach us back then, he would call me Sanabi when my actual name is Fazabi and teach me how to write ABC. They say our school ground was a dumping ground and that people burn the death nearby, but now they see the school building and our playing ground and I have something to say back to them”, she laughs. She says “I have studied at CEC School from class zero, when students from other schools make fun of our school I tell them my school is better than theirs because I know I have been studying here since the beginning and we keep getting better”.

Fazabi is continuing her studies in X standard in Community Educational Center School, she enjoys every moment of her schooling, she is grateful for having friends “I would have been very upset if I was taken back to Manipur. I have my friends here and I love coming to school”. She enjoys the tailoring lessons that CEC School provides and also takes part in dancing lessons.

Rescued by education Fazabi plans to continue her education and hope one day she will earn for herself and take care of her mother. Like Fazabi there are others who have been with CECS throughout its journey, they have been educating themselves and realizing a dream everyday.

CECS is glad to be a part of her journey and many other children, they make our work meaningful and worthier. We are happy to dedicate our work towards the transformation of her life and that of her parents and their communities



# LIST OF PROJECTS 2015 - 2016

Sl. No	Name of Programme
1.	Community Educational Centre High School, Dimapur
2.	Rajeshwari Karuna School, Tuli, Mokokchung
3.	Informal Education for Marginalized Children (IEMC) & National Child Labour Project (NCLP)
4.	Mobile Medical Unit (MMU)
5.	Open Shelter
6.	CHILDLINE 1098





# ADMINISTRATION TEAM



**Subonenba Longkumer**  
Director



**Toshi Aier**  
Program Officer



**Ameli**  
Research & Documentation Officer



**Lanuakum**  
Accounts Officer



**B. Soun**  
Accounts Assistant



**Suhdila**  
Accounts Assistant



**Neiketulie**  
City Coordinator CHILDLINE



**Limawapang**  
Coordinator MMU



**Tozung**  
Coordinator, NCLP/IEMC/Open Shelter



**Tali Kichu**  
Asst. Coordinator, NCLP/IEMC/Open Shelter



**Mhondamo Lotha**  
Headmaster, Coordinator RKS Tuli



**A. Lohrii Soruna**  
Headmaster, Coordinator CECH School

FOR THEIR **SUPPORT** AND CONTRIBUTION  
WE ARE IMMENSELY GRATEFUL.  
BECAUSE OF THEIR **GENEROSITY**  
WE ARE ABLE TO PERFORM  
OUR LIFE **CHANGING** WORK EVERY DAY

### **OUR VISION**

We believe that in bringing a single change we will inspire a chain of changes to see us through a lifetime. CECS will be a driving force and a movement in itself to fight against child labour. We will strive towards our unshakable commitment towards educating and improving the lives of children and to give our community our resourcefulness.

### **OUR SLOGAN**

“We Rise by Lifting Others”

### **OBJECTIVES**

- \* Quality education for the marginalized children
- \* To reduce mortality rate through better health care
- \* Empowering the community through income enhancement programmes
  - \* Advocating child rights and child protection
  - \* Community Development Programmes
- \* Empowering youth through skill development, entrepreneurship and training programmes.



## OUR KEY CONTRIBUTORS / PARTNERS



The Hans Foundation has been our most vital funder/partner since 2010 supporting programmes in education, health, water and women empowerment and livelihood programmes. The Hans foundation supports CECS initiative to help rural women in and around Dimapur and Mokokchung districts of Nagaland through WELP programme for income enhancement. The foundation has also been supporting CECS educational programmes for underprivileged children.



Social Welfare Department, Nagaland supports our Open Shelter programme through its ICPS scheme which is a 24 hour crisis management centre to receive and provide necessary assistance to children.



National Child Labour Project supports CECS informal educational care programme for children engaged in labour and hazardous occupation. This programme ensures that they have access to needed education, health care and protection.



### Wipro Cares

Wipro Care supports our Informal Education for Marginalized Children (IEMC) Programme which is a non formal education programme. It has mainstreamed with 143 children, 12 centres and supporting 24 education volunteers.



Ministry of Women and Child Development, Government of India supports the funding of CHILDLINE project through CHILDLINE India Foundation.

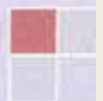
2016

ANNUAL AUDIT REPORT  
FOR THE FINANCIAL YEAR 2015-16  
OF

**COMMUNITY EDUCATIONAL CENTRE  
SOCIETY**

**GRACE COLONY, KUDA-C, NAGARJAN, POST BOX-443,  
DIMAPUR-797112, NAGALAND**

AUDITORS'  
KHANDELIA & SHARMA  
Chartered Accountants  
G. S. Road, Dimapur  
Nagaland: 797 112







## AUDITORS' REPORT

We have audited the accompanying financial statements of **COMMUNITY EDUCATIONAL CENTRE SOCIETY, Grace Colony, Kuda C, Nagarjan, Post Box-433, Dimapur: - 797112, Nagaland** which comprise the Balance Sheet as at 31<sup>st</sup> March, 2016, and the Income & Expenditure Account for the year then ended and a summary of significant accounting policies and other explanatory information.

Management is responsible for the preparation of these financial statements based on our audit. We conducted our audit in accordance with the Standards on Auditing issued by the Institute of Chartered Accountants of India. Those standards require that we comply with ethical requirements and plan and perform the audit to obtain reasonable assurance about whether the financial statements are free from material misstatement.

An audit involves performing procedures to obtain audit evidence about the amounts and disclosures in the financial statement. The procedures selected depend on the auditors' judgment including the assessment of the risk of material misstatement, whether due to fraud or error. In making those risk assessments, the auditor consider internal control relevant to the firms preparation and fair presentation of the financial statement in order to design audit procedures that are appropriate in circumstances. An audit also includes evaluating the appropriateness of accounting policies used and the reasonableness of the accounting estimates made by management, as well as evaluating the overall presentation of the financial statements.

We believe that the audit evidence we have obtained is sufficient and appropriate to provide a basis for our audit opinion.

In our opinion and to the best of our information and according to the explanations given to us, the financial statements of said enterprise for the year ended 31<sup>st</sup> March, 2016 are prepared, in all material respects, in accordance with prevalent law of India.

Dated: 30.05.2016  
Place: Dimapur



For Khandelia & Sharma  
Chartered Accountants

*Dinesh Sharma*  
(Dinesh Sharma)  
Partner, M. No: 087827

**COMMUNITY EDUCATIONAL CENTRE SOCIETY**

Grace Colony, Nagarjan, Dimapur, Nagaland

Reg. No.H/RS-4974, Dt:16/05/2008

**BALANCE SHEET**

AS ON 31st MARCH' 2016

CAPITAL & LIABILITES	₹	₹	ASSETS & PROPERTIES	₹	₹
<b>Capital Fund:</b>			<b>Fixed Assets:</b>		
<u>General Fund:</u>			1. Gross Block [W.D.V]	68,834,814	
Opening Balance	(5,787,367)		Less: Depreciation	17,094,723	
Add: Transferred from Corpus Fund	145,466,825		Net Block [W.D.V]	51,540,091	51,540,091.30
Add: Excess of income over expenditure	2,439,678	142,119,135.82	(Details as per the Annexure-8)		
<u>Corpus Fund:</u>			<b>2. Work in progress:</b>		
1. Rajeshwari Karuna School, Tuli	5,555,000		As per last A/c	90,421,626	
2. Rajeshwari Karuna SHIKSHA ARIYOJANA	13,015,000		Addition during the year	-	90,421,626.00
3. Rajeshwari Karuna School, Tuli	82,798,179				
4. Integrated Water Resource Management & Supply	11,950,000		<b>Current Assets:</b>		
5. Child Rights on Wheel	920,000		Fixed Deposit with Punjab & Sindh Bank	150,000	
6. Hans Karuna Swasthya Pariyojna - Ambulance	2,561,698		Less: Matured during last year	150,000	
7. Landscaping	4,294,553				
8. CEC High School, Dimapur	11,670,000		<b>Closing Balance:</b>		
9. Construction Of Rajeshwari Karuna School, Tuli -Continuation	12,702,395		Cash in Hand	9,384	
	145,466,825		Cash at S. B. I.	66,160	
Less: Transferred to General Fund	145,466,825		[A/c No. 31151383772]	33,161	
			[A/c No.34883652153]	65,968	
<b>Reserve Fund:</b>			[A/c No.35195120949]	4,609	
As per last year		140,880.00	[A/c No.31658802836]	828	
			[A/c No.30496234112]	328,189	508,298.52
Temporary Loan		210,000.00	[A/c No.32665459154]		
			(cash as certified by the management)		
		142,470,015.82			142,470,015.82

In terms of our separate report of even date.

Date: 30th May, 2016

Place: Dimapur.



For Khandelia & Sharma  
Chartered Accountants

*Dinesh Sharma*  
Dinesh Sharma  
Partner

M. No: 087827



**COMMUNITY EDUCATIONAL CENTRE SOCIETY**  
**Grace Colony, Nagarjan, Dimapur, Nagaland**  
 Reg. No.H/RS-4974, Dt:16/05/2008

**INCOME & EXPENDITURE ACCOUNT**  
**FOR THE YEAR ENDED 31st MARCH' 2016**

EXPENDITURE	₹	₹	INCOME	₹	₹
To,			By, <u>Grant-in-Aid:</u>		
1. Rajeshwari Karuna School, Tuli. (Details as per the Annexure-1)	7324116.48		(Received For the following projects:-		
2. CEC High School, Dimapur (Details as per the Annexure-2)	3455908		HANS Mobile Medical Services	1697638	
3. Additional Budget For CEC HIGH SCHOOL Dimapur's Infrastructure and Mid Day Meal For Students (Details as per the Annexure-3)	3259920		Additional Budget For CEC HIGH SCHOOL	3827800	
4. Mobile Medical Unit in 15 villages (Details as per the Annexure-4)	1731530		CEC High School, Dimapur	3177910	
5. HANS Mobile Medical Services (Details as per the Annexure-5)	1790862	17,562,336.48	Construction Of Rajeshwari Karuna School, Tuli _Cont..	19671375	28,374,723.00
6. Integrated Child Protection Scheme (Childline) (Details as per the Annexure-6)	420000		Childline India Foundation	210000	
7. Informal Education for Marginalised Children (Details as per the Annexure-7)	1618500		S. C. P. S. (Open Shelter Home)	2198620	
8. S. C. P. S. (Open Shelter Home)	2198620		National Child Labour Project	2300000	
9. National Child Labour (NCLP)	4590000		WIPRO CARE TRUST (IEMC)	1928000	6,636,620.00
10. Administrative Cost	325000		Bank Interest		239,137.00
11. Bank Charges	721	9,150,841.00	Own Contribution		610,800.00
Depreciation on Fixed Assets		6,864,324.70	<u>Income Generation Activities.</u>		
" Excess income over expenditure c/f to balance sheet		2,439,677.82	Registration Fees (MMU)	135000	
		<b>36,017,180.00</b>	Sale of piglets (WELP)	11000	
			Income from Bus (CECS)	4500	
			Other Income	5400	155,900.00
					<b>36,017,180.00</b>

In terms of our separate report of even date.



Date: 30th May, 2016  
Place: Dimapur



For Khandelia & Sharma  
Chartered Accountants

*Dinesh Sharma*  
Dinesh Sharma  
Partner  
M. No: 087827

**COMMUNITY EDUCATIONAL CENTRE SOCIETY**  
**Grace Colony, Nagarjan, Dimapur, Nagaland**

Reg. No.H/RS-4974, Dt:16/05/2008

**RECEIPTS & PAYMENTS A/C**

FOR THE PERIOD FROM 1ST APRIL 2015 TO 31st MARCH 2016

RECEIPTS	₹	₹	PAYMENTS	₹	₹
<b>Opening Balance:</b>			<b>FC Account:</b>		
Cash in Hand	-		1. Rajeshwari Karuna School, Tuli (Details as per the Annexure-1)	20,147,387	
Cash at S. B. I. [A/c No. 31151383772]	2,044,237		2. CEC High School, Dimapur (Details as per the Annexure-2)	3,575,908	
[A/c No.31658802836]	14,437		3. Additional Budget For CEC HIGH SCHOOL Dimapur's Infrastructure and Mid Day Meal For Students (Details as per the Annexure-3)	3,822,173	
[A/c No.30496234112]	2,290,622		4. Mobile Medical Unit in 15 villages (Details as per the Annexure-4)	1,731,530	
[A/c No.32665459154]	524	4,349,820.00	5. HANS Mobile Medical Services (Details as per the Annexure-5)	1,790,862	31,067,860.48
<b>Grant-in- Aid Received From:</b>			<b>Local Account:</b>		
<i>Through The Hans Foundation for the following FCRA Projects:-</i>			6. Integrated Child Protection Scheme (Childline) (Details as per the Annexure-6)	420,000	
HANS Mobile Medical Services	1,697,638		7. Informal Education for Marginalised Children (Details as per the Annexure-7)	1,616,500	
Additional Budget For CEC HIGH SCHOOL	3,827,600		8. S. C. P. S. (Open Shelter Home)	219,862.00	
CEC High School, Dimapur	3,177,910		9. National Child Labour (NCLP)	459,000.00	
Construction Of Rajeshwari Karuna School, Tuli _Cont..	19,671,375	28,374,723.00	10. Administrative Cost	325,000	
<b>Local Fund:</b>			11. Bank Charges	721	9,150,841.00
Childline India Foundation	210,000		<b>Closing Balance:</b>		
S. C. P. S. (Open Shelter Home)	2,198,620		Cash in Hand	9,384	
National Child Labour Project	2,300,000		Cash at S. B. I.		
WIPRO CARE TRUST (IEMC)	1,928,000	6,636,620.00	[A/c No. 31151383772]	66,160	
Bank Interest		225,637.00	[A/c No.34883652153]	33,161	
Own Contribution		610,800.00	[A/c No.35195120949]	65,968	
Temporary Loan		210,000.00	[A/c No.31658802836]	4,609	
<u>D. with Punjab &amp; Sind Bank</u>			[A/c No.30496234112]	828	
<u>Matured</u>		163,500.00	[A/c No.32665459154]	328,189	508,298.52
<b>Income Generation Activities:</b>			<i>[cash as certified by the management]</i>		
Registration Fees (MMU)	135,000				
Sale of piglets (WELP)	11,000				
Income from Bus (CECS)	4,500				
Other Income	5,400	155,900.00			
		40,727,000.00			40,727,000.00

In terms of our separate report of even date

Date: 30th May, 2016  
Place: Dimapur



For Khandelia & Sharma  
Chartered Accountants

*Dinesh Sharma*  
Dinesh Sharma  
Partner

M. No: 087827



**COMMUNITY EDUCATIONAL CENTRE SOCIETY**

**Grace Colony, Nagarjan, Dimapur, Nagaland**

Reg. No.H/RS-4974, Dt:16/05/2008

ANNEXURE :- "1"

"A. Rajeshwari Karuna School, Tuli. [RIST/POLICY/165/FUNDING 2012-2013]"

Sl.No	Program /Particulars	Estimated Budget approved by The Hans Foundation	Expenditure out of THF Grant	Expenditure from Institution's own resources	Total Expenditure
	1	2	3	4	(3+4)
<b>1</b>	<b>Infrastructure</b>				
1.1	Land & Building	-			-
1.2	Maintenance of play ground & gardens	-			-
1.3	Drinking water/tank/boring	-			-
1.4	Electricity connection/wiring and	-			-
	<b>A</b>	-	-	-	-
<b>2</b>	<b>Capital Assets</b>				
2.1	School Bus LP712/36 Str (School Bus)	3,956,670.00	3,134,360.00		3,134,360.00
2.2	Vehicle for office use (Ecco)	420,000.00	392,498.00		392,498.00
2.3	Pick up truck for carrying goods	615,000.00	-		-
2.4	Insurance & Registration for all the	180,000.00	171,165.00		171,165.00
	<b>B</b>	<b>5,171,670.00</b>	<b>3,698,023.00</b>	-	<b>3,698,023.00</b>
<b>3</b>	<b>School Supplies &amp; Materials</b>				
3.1	Uniforms, necktie, belt	600,000.00	156,000.00		156,000.00
3.2	Books	300,000.00	403,600.00		403,600.00
3.3	Computers, CLD Projector, zerox	3,000,000.00	1,289,090.00		1,289,090.00
3.4	Mess (100x2000x12)	2,400,000.00	705,646.00		705,646.00
3.5	PA system & musical instrument	400,000.00	399,089.00		399,089.00
3.6	Gym/cycling	300,000.00	151,232.00		151,232.00
3.7	Mid day meal	600,000.00	193,810.00		193,810.00
3.8	Books for library	200,000.00	45,634.00		45,634.00
3.9	Contingency/office rent/stationery	500,000.00	239,859.00		239,859.00
3.10	Travel/vehicle maintenance	250,000.00	275,000.00		275,000.00
3.11	Play & learn materials	3,500,000.00	894,741.00		894,741.00
3.12	Chair, benchh, table, almariah, shelves,	5,000,000.00	3,807,005.00		3,807,005.00
	<b>C</b>	<b>17,050,000.00</b>	<b>8,560,706.00</b>	-	<b>8,560,706.00</b>
<b>4</b>	<b>Administration</b>				
4.1	Adminstrator	240,000.00	120,000.00		120,000.00
4.2	Head teacher	180,000.00	90,000.00		90,000.00
4.3	Accountant	132,000.00	66,000.00		66,000.00
4.4	Teachers	1,440,000.00	720,000.00		720,000.00
4.5	Mess management	120,000.00	60,000.00		60,000.00
4.6	Hostel warden	120,000.00	60,000.00		60,000.00
4.7	Watch man cum care taker	120,000.00	60,000.00		60,000.00
4.8	Office assistant	120,000.00	60,000.00		60,000.00
4.9	Cook	120,000.00	60,000.00		60,000.00
4.10	Gardener	96,000.00	48,000.00		48,000.00
4.11	Driver	288,000.00	144,000.00		144,000.00
4.12	Engineer	240,000.00	120,000.00		120,000.00
	<b>D</b>	<b>3,216,000.00</b>	<b>1,608,000.00</b>	-	<b>1,608,000.00</b>
<b>5</b>	<b>Contingecy (Bank Charges)</b>		2,439.00	-	2,439.00
	<b>Sub Total: "A"</b>	<b>25,437,670.00</b>	<b>13,869,168.00</b>	-	<b>13,869,168.00</b>



## COMMUNITY EDUCATIONAL CENTRE SOCIETY

Grace Colony, Nagarjan, Dimapur, Nagaland.

Reg. No.H/RS-4974, Dt:16/05/2008

**" B. Rajeshwari Karuna School, Tuli. [RIST/POLICY/165/FUNDING 2012-2013]"**

Sl.No	Program /Particulars	Estimated Budget approved by The Hans Foundation	Expenditure out of THF Grant	Expenditure from Institution's own resources	Total Expenditure
	1	2	3	4	(3+4)
I	PERSONNEL	1,617,300.00	1,368,000.00	249,300.00	1,617,300.00
II	FIELD VISIT				
	Employee Name				
	TOTAL TRAVEL & LOCAL TRANSPORT				
III	PROGRAM COST				
1	Special Program & Events (Annual	40,000.00	39,800.00	-	39,800.00
2	Educational Tours	30,000.00	13,500.00	-	13,500.00
3	Teachers Training	20,000.00	10,000.00	-	10,000.00
	TOTAL PROGRAM	90,000.00	63,300.00	-	63,300.00
IV	DIRECT COST FOR PROJECT				
1	School Bus LP712/36 Str	-	-	-	-
2	Maruti Ecco (Vehicle for office use)	-	-	-	-
3	Pick up truck for carrying goods	-	-	-	-
4	Uniforms ( summer & winter wear)	172,500.00	172,500.00	-	172,500.00
5	Books & study materials	-	-	-	-
6	Computers, CLD Projector, zerox	-	-	-	-
7	Mess charges (Rs 2250*6=13500)	364,500.00	389,340.00	-	389,340.00
8	Mess charges (35*3000*6) Staff	630,000.00	604,750.00	-	604,750.00
9	PA system & musical instrument	100,000.00	100,000.00	-	100,000.00
10	Gym/cycling	-	-	-	-
11	Mid day meal (6000 X 69 =50025)	248,400.00	248,380.00	-	248,380.00
12	Books for library	-	-	-	-
13	office supplies, printing, stationaries,	30,000.00	30,000.00	-	30,000.00
14	Travel/vehicle maintenance , Gas	240,000.00	240,400.00	-	240,400.00
15	Play & learn materials	-	-	-	-
16	Classroom furnitures, green board,	1,500,000.00	1,499,689.00	-	1,499,689.00
17	Water treatment, filters	350,000.00	350,000.00	-	350,000.00
18	Electricity bills	240,000.00	220,000.00	-	220,000.00
19	Air conditioner for Library, guest house,	140,000.00	140,000.00	-	140,000.00
20	50 KVA generator	600,000.00	600,000.00	-	600,000.00
21	Bank Charges	-	2,560.48	-	2,560.48
	TOTAL : DIRECT COST FOR PROJECT	4,615,400.00	4,597,619.48	-	4,597,619.48
	Sub Total: "B"	6,322,700.00	6,028,919.48	249,300.00	6,278,219.48
	Grand Total: "A" + "B"	31,760,370.00	19,898,087.48	249,300.00	20,147,387.48





## COMMUNITY EDUCATIONAL CENTRE SOCIETY

Grace Colony, Nagarjan, Dimapur, Nagaland

Reg. No. H/RS-4974, Dt:16/05/2008

ANNEXURE : - "2"

"CEC High School, Dimapur- [RIST/POLICY/197/FUNDING 2015-2016]"

Sl. No.	Particulars	Estimated Budget approved by The Hans Foundation	Expenditure out of THF grant	Expenditure from Institution's own resources	Total Expenditure
	1	2	3	4	(3+4)
<b>A</b>					
I	Personnel Cost	2,244,000.00	2,057,000.00	187,000.00	2,244,000.00
II	FIELD VISIT				-
	NA	-			-
III	PROGRAM COST				-
	NA	-			-
	<b>TOTAL PROGRAM COST</b>	-			-
IV	<b>DIRECT COSTS FOR PROJECT IMPLEMENTATION</b>				
1	Books & Stationeries	485,000.00	481,369.00	3,500.00	484,869.00
	Maintenance of school				
2	bus/gas/insurance	180,000.00	156,275.00	10,936.00	167,211.00
3	School Maintenance	60,000.00	50,500.00	25,220.00	75,720.00
4	Office Supplies/bills	180,000.00	135,121.00	44,349.00	179,470.00
5	Training expenses for 29 teachers	60,000.00	50,000.00		50,000.00
6	Cost for organising special programs	160,000.00	97,530.00	16,345.00	113,875.00
7	StudeNts study tour	60,000.00	20,000.00	33,150.00	53,150.00
	<b>TOTAL DIRECT COSTS FOR PROJECT IMPLEMENTATION</b>	<b>1,185,000.00</b>	<b>990,795.00</b>	<b>133,500.00</b>	<b>1,124,295.00</b>
B	<b>ADMINISTRATIVE/INDIRECT COSTS</b>	<b>200,000.00</b>	<b>167,815.00</b>	<b>39,500.00</b>	<b>207,315.00</b>
	Contingency (Bank Charges)	-	298.00	-	298.00
<b>Grand Total:</b>		<b>3,629,000.00</b>	<b>3,215,908.00</b>	<b>360,000.00</b>	<b>3,575,908.00</b>



**COMMUNITY EDUCATIONAL CENTRE SOCIETY**

**Grace Colony, Nagarjan, Dimapur, Nagaland**

Reg. No.H/RS-4974, Dt:16/05/2008

**ANNEXURE : - "3"**

**"Additional Budget For CEC HIGH SCHOOL Dimapur's Infrastructure and Mid Day Meal For Students- [THF/POLICY/033/FUNDING 2015-2016]"**

Sl. No.	Particulars	Estimated Budget approved by The Hans Foundation	Expenditure out of THF grant	Expenditure from Institution's own resources	Total Expenditure
	<u>1</u>	2	3	4	(3+4)
<b>1</b>	<b>UNIFORM</b>				
1.1	SHIRT	350,000.00	350,000.00		350,000.00
1.2	PANT	300,000.00	300,000.00		300,000.00
	<b>TOTAL (A)</b>	<b>650,000.00</b>	<b>650,000.00</b>	-	<b>650,000.00</b>
<b>2</b>	<b>MID DAY MEAL</b>				
2.1	MEAL	1,464,000.00	1,457,180.00		1,457,180.00
2.2	COOK	48,000.00	48,000.00		48,000.00
2.3	COOK HEALPER	30,000.00	30,000.00		30,000.00
2.4	UTENSELS/plate/cup/etc.	160,000.00	159,653.00		159,653.00
2.5	BORE WELL & INSTALLATION OF PUMP	60,000.00	62,600.00		62,600.00
2.6	IRON REMOVABLE PLANT & FILTRATION	200,000.00	200,000.00		200,000.00
2.7	MAINTAINANCE + cooking gas	12,000.00	12,000.00		12,000.00
	<b>TOTAL (B)</b>	<b>1,974,000.00</b>	<b>1,969,433.00</b>	-	<b>1,969,433.00</b>
	<b>Additional Budget for CEC School</b>				
<b>3</b>	<b>Library &amp; I.T Room</b>				
3.1	AIRCONDITIONER 1.5 TON	140,000.00	140,000.00		140,000.00
	<b>LANDSCAPING DEVELOPMENT &amp;</b>				
<b>4</b>	<b>REPAINTING OF CEC SCHOOL</b>				
4.1	LANDSCAPING	712,600.00	712,600.00		712,600.00
4.2	REPAINTING OF CEC SCHOOL	351,200.00	350,140.00		350,140.00
	<b>TOTAL (C)</b>	<b>1,203,800.00</b>	<b>1,202,740.00</b>	-	<b>1,202,740.00</b>
	<b>Grand Total: (A+B+C)</b>	<b>3,827,800.00</b>	<b>3,822,173.00</b>	-	<b>3,822,173.00</b>





## COMMUNITY EDUCATIONAL CENTRE SOCIETY

Grace Colony, Nagarjan, Dimapur, Nagaland.

Reg. No.H/RS-4974, Dt:16/05/2008

ANNEXURE : - "4"

"Mobile Medical Unit in 15 villages- [THF/POLICY/123/FUNDING 2014-2015]"

Sl. No.	Particulars	Estimated Budget approved by The Hans Foundation	Expenditure out of THF grant	Expenditure from Institution's own resources	Total Expenditure
	1	2	3	4	(3+4)
<b>1</b>	<b>Personnel Cost</b>				
1.1	Project Coordinator	204,000.00	102,000.00		102,000.00
1.2	Office Assistant	72,000.00	36,000.00		36,000.00
1.3	Drivers	192,000.00	96,000.00		96,000.00
	<b>Sub Total 1</b>	<b>468,000.00</b>	<b>234,000.00</b>	-	<b>234,000.00</b>
<b>2</b>	<b>Programme Cost</b>				
<b>2.1</b>	<b>Activities</b>				
2.1.1	Training/orientation of volunteers/staff	60,000.00	10,000.00		10,000.00
2.1.2	Medicine /referral cases expense	1,500,000.00	559,496.00		559,496.00
	<b>Sub Total 2.1</b>	<b>1,560,000.00</b>	<b>569,496.00</b>	-	<b>569,496.00</b>
<b>2.2</b>	<b>Travel Cost</b>				
	Vehicle				
2.2.1	Maintenance/Gas/Travel/Insurance	350,000.00	172,500.00		172,500.00
	<b>Sub Total 2.2</b>	<b>350,000.00</b>	<b>172,500.00</b>	-	<b>172,500.00</b>
<b>2.3</b>	<b>Programme Personnel Cost</b>				
2.3.1	Doctor	840,000.00	334,800.00		334,800.00
2.3.2	Nurse	180,000.00	90,000.00		90,000.00
2.3.3	Lab Technician	120,000.00	60,000.00		60,000.00
2.3.4	Pharmacist	96,000.00	48,000.00		48,000.00
2.3.5	Health Volunteers	75,000.00	222,500.00		222,500.00
	<b>Sub Total 2.3</b>	<b>1,311,000.00</b>	<b>755,300.00</b>	-	<b>755,300.00</b>
	<b>Sub Total 2</b>	<b>3,221,000.00</b>	<b>1,497,296.00</b>	-	<b>1,497,296.00</b>
<b>3</b>	<b>Administrative Cost</b>				
3.1	Office Supplies	-			
3.2	Other Indirect Cost (Bank Charges)	-			
	<b>Sub Total 3</b>				
<b>4</b>	<b>Contingencies</b>	<b>110,670.00</b>	<b>234.00</b>		<b>234.00</b>
	<b>Grand Total</b>	<b>3,799,670.00</b>	<b>1,731,530.00</b>	-	<b>1,731,530.00</b>



## COMMUNITY EDUCATIONAL CENTRE SOCIETY

Grace Colony, Nagarjan, Dimapur, Nagaland

Reg. No.H/RS-4974, Dt:16/05/2008

ANNEXURE : - "5"

"HANS Mobile Medical Services- [THF/POLICY/032/FUNDING 2015-2016]"

Sl. No.	Particulars	Estimated Budget approved by The Hans Foundation	Expenditure out of THF grant	Expenditure from Institution's own resources	Total Expenditure
	<u>1</u>	<u>2</u>	<u>3</u>	<u>4</u>	<u>(3+4)</u>
I	Personnel	2,166,600.00	1,065,800.00		1,065,800.00
II	FIELD VISITS				
	Employee Name	NA			
	TOTAL TRAVEL & LOCAL TRANSPORT	-			
III	PROGRAM COST				
	Medicine	900,000.00	449,889.00		449,889.00
	Referral of emergency Cases (to private hospitals)	180,000.00	26,000.00		26,000.00
	Fuel	264,000.00	123,000.00		123,000.00
	Vehicle Maintenance	50,000.00	24,470.00		24,470.00
	Vehicle Insurance renewal	25,000.00	5,703.00		5,703.00
	Training of HWs	32,000.00	16,000.00		16,000.00
	Awareness meeting by HWs	60,000.00	30,000.00		30,000.00
	<b>TOTAL PROGRAM</b>	<b>1,511,000.00</b>	<b>675,062.00</b>	-	<b>675,062.00</b>
IV	DIRECT COST FOR PROJECT IMPLEMENTATION				-
	Stationery & Communication	24,000.00	20,000.00		20,000.00
	Medical Equipments + HW kit	30,000.00	30,000.00		30,000.00
	Bank Charges				-
	<b>TOTAL: DIRECT COST FOR PROJECT IMPLEMENTATION</b>	<b>54,000.00</b>	<b>50,000.00</b>	-	<b>50,000.00</b>
	<b>Grand Total</b>	<b>3,731,600.00</b>	<b>1,790,862.00</b>	-	<b>1,790,862.00</b>





## COMMUNITY EDUCATIONAL CENTRE SOCIETY

Grace Colony, Nagarjan, Dimapur, Nagaland

Reg. No.H/BS-4974, Dt:16/05/2008

### ANNEXURE : - "6"

*"Integrated Child Protection Scheme- [MWCD, Gov. of India (through Childline India, Mumbai)]"*

Sl. No.	Particulars	Estimated Budget approved	Expenditure out of grant received	Expenditure from Institution's own resources	Total Expenditure
	1	2	3	4	(3+4)
<b>A</b>	<b>RECURRING EXPENDITURE</b>				-
(I)	Staff Salary				
	City Coordinator	210,000.00	210,000.00	-	210,000.00
(II)	Administrative Expenses	210,000.00			-
	Computer Maintenance		7,400.00	-	7,400.00
	Communication		6,962.00	-	6,962.00
	Telephone/Mobile		7,749.00	-	7,749.00
	Travel/Conveyance		49,630.00	-	49,630.00
	Stationery		20,088.00	-	20,088.00
	Awareness Material		49,560.00	-	49,560.00
	Internet Connection		-	-	-
	Audit Fee		3,000.00	-	3,000.00
	Training & Orientation		65,311.00	-	65,311.00
	Miscellaneous		300.00	-	300.00
	<b>Grand Total</b>	<b>420,000.00</b>	<b>420,000.00</b>	<b>-</b>	<b>420,000.00</b>

### ANNEXURE : - "7"

*"Informal Education for Marginalized Children (IEMC)- [WIPRO CARE TRUST]"*

Sl. No.	Particulars	Estimated Budget approved	Expenditure out of grant received	Expenditure from Institution's own resources	Total Expenditure
	1	2	3	4	(3+4)
3	Professional				
1	Staff Salary				
1.1	Project Coordinator	168,000.00	140,000.00	-	140,000.00
1.2	Assistant Coordinator	108,000.00	90,000.00	-	90,000.00
1.3	Education Volunteers	1,152,000.00	960,000.00	-	960,000.00
2	Infrastructure & Others				-
	Books/Stationery	120,000.00	120,000.00	-	120,000.00
	Teachers' Training	30,000.00	30,000.00	-	30,000.00
	Travel/Transport/Centre Rent	300,000.00	239,000.00	-	239,000.00
	Contingency/Documentation	50,000.00	37,500.00	-	37,500.00
	<b>Grand Total</b>	<b>1,928,000.00</b>	<b>1,616,500.00</b>	<b>-</b>	<b>1,616,500.00</b>



**COMMUNITY EDUCATIONAL CENTRE SOCIETY**  
Grace Colony, Nagarjan, Dimapur, Nagaland

**FIXED ASSETS FOR THE YEAR ENDED ON 31st MARCH, 2016**

**Annexure - 8 - DETAILS OF FIXED ASSETS**

Sl. No.	Particulars	Depn. Rate %	GROSS BLOCK			DEPRECIATION			NET BLOCK				
			Opening Balance as on 1.4.2015	Addition during the year 180 days & more	Less than 180 days	Additional during the year	Excession during the year	Opening Bal as on 1.4.2015	During the year 180 days & more	Less than 180 days	Total Depn	As at 31.03.2016	As at 31.3.2015
1	Assets acquired from Foreign Fund		4,000,000	-	-	-	-	-	-	-	-	4,000,000	4,000,000
2	Land & Land Development (CECS)		7,600,000	-	-	-	-	-	-	-	-	7,600,000	7,600,000
3	Land & Land Development (TULU)		654,065	-	-	-	-	-	77,139	-	216,946	437,119	514,258
4	Vehicle (one pick-up truck)	15	65,200	-	-	-	-	-	6,536	-	28,162	37,036	43,574
5	Vehicle (one two wheeler)	10	3,154,934	3,807,005	1,459,669	5,306,604	-	661,981	74,984	-	1,079,060	7,382,538	2,812,809
6	Furniture/chair/table, etc	15	815,000	-	-	-	-	62,239	-	-	348,983	499,017	548,255
7	Vehicle (Taxis/Wingler)	60	1,365,000	1,289,090	-	2,654,090	-	972,246	-	-	2,005,628	648,164	331,320
8	Computer/printer/camera/etc	10	50,000	-	612,600	662,600	-	3,848	-	-	46,093	616,597	38,475
9	Drinking water plant/tank/boring	10	1,000,000	-	-	76,950	-	76,950	-	-	307,450	692,550	769,500
10	Drinking water plant/tank/boring(TULU)	15	500,000	-	-	104,914	-	50,263	-	-	215,177	284,623	335,086
11	Electrical Installation	15	779,758	-	-	168,673	-	91,963	-	-	248,636	531,122	613,085
12	Vehicle (one four wheeler)	15	225,048	-	-	62,237	-	24,419	-	-	86,076	138,372	162,791
13	Vehicle (two wheeler)	15	1,399,669	-	-	321,577	-	107,812	-	-	439,369	970,310	1,078,122
14	Construction of pipay	10	384,500	-	-	85,813	-	29,669	-	-	115,662	268,838	288,967
15	Construction of shop	10	11,950,000	-	-	2,351,500	-	959,850	-	-	3,311,350	8,638,650	9,598,500
16	Construction of Water Reservoir	10	9,618,253	-	-	2,146,660	-	747,159	-	-	2,893,819	6,724,434	7,471,590
17	Construction of school building(CECS)	15	1,485,071	-	-	317,434	-	175,146	-	-	492,580	992,491	1,167,637
18	Vehicle (Ambulance)	15	711,500	-	-	197,441	-	77,109	-	-	374,550	436,950	514,059
19	Vehicle (Mahindra)	15	74,895	-	-	14,098	-	5,090	-	-	68,188	60,597	60,597
20	Generator	15	24,000	-	-	6,860	-	23,601	-	-	30,261	273,739	17,340
21	Refrigerator	15	2,520,500	-	-	669,453	-	273,165	-	-	972,618	1,547,932	1,821,067
22	JCB (excavator)	15	1,696,100	-	-	471,223	-	184,032	-	-	655,255	1,042,845	1,226,877
23	Dumper (LPK) 1618	15	1,210,272	-	-	268,695	-	142,737	-	-	401,432	808,840	951,577
24	Vehicle (TATA LP71276)	15	350,000	-	-	62,119	-	110,546	-	-	172,665	876,424	287,881
25	Musical Instrument & Accessories	15	1,199,821	399,089	-	1,598,910	-	103,046	-	-	432,787	1,061,775	1,060,288
26	Play & Learning Materials	15	194,587	894,741	-	1,089,328	-	293,264	-	-	62,369	132,218	155,551
27	Medical Equipments	15	194,587	-	-	39,036	-	23,333	-	-	1,043,663	1,043,663	1,043,663
28	Library Books & Teaching Materials	100	968,049	45,634	-	1,013,683	-	864,083	-	-	554,703	3,143,320	719,449
29	Vehicle (Till School)	15	-	3,698,023	-	3,698,023	-	554,703	-	-	7,983	151,670	-
30	Miscellaneous Assets	10	-	-	159,653	159,653	-	-	-	-	7,983	-	-
31	Total (A)		54,028,107	10,133,982	3,251,947	67,414,036	6,781,669	6,594,572	187,097	16,512,303	50,901,733	44,297,408	
32	Assets acquired from Local Fund		-	-	-	-	-	-	-	-	-	-	-
33	Building (School & Office)	10	7,000,000	-	-	186,700	-	51,030	-	-	240,730	459,270	510,300
34	Furniture & Fixture	15	1,088,113	-	-	41,217	-	9,839	-	-	51,066	55,757	65,596
35	Library Books & Teaching Materials	100	8641	-	-	8,641	-	6,673	-	-	8,641	5,782	14,455
36	Computer & Accessories	60	225,654	-	-	225,654	-	-	-	-	220,072	118,020	131,133
37	Miscellaneous Assets	10	179,890	-	-	179,890	-	13,113	-	-	61,860	638,628	721,484
38	Total of (B)		1,221,188	-	-	1,221,188	-	82,655	-	-	582,369	638,628	721,484
39	Total of (A+B)		55,249,295	10,133,982	3,251,947	68,634,814	6,864,325	6,677,227	187,097	17,094,732	51,540,091	45,018,892	
40	PREVIOUS YEAR		50,726,953	-	-	55,249,290	-	4,522,337	-	-	16,230,398	45,018,892	-

Date: 31/03/2016  
  
 Treasurer  
 Community Educational Centre Society  
 Grace Colony, Nagarjan, Dimapur, Nagaland







**Grace Colony**  
**Kuda C, Lane 25, Nagarjan**  
P.O. Box 443  
Dimapur : Nagaland  
☎ 03862 232747 | 03862 224280  
email: [cecsociety@yahoo.com](mailto:cecsociety@yahoo.com) | website: [www.cecsociety.org](http://www.cecsociety.org)